

# IP multi-channel Datalogger

DATA ACQUISITION | HYDROLOGY | GROUNDWATER | FLOOD | WATER QUALITY

## General Description

HyQuest Solutions' IP datalogger iRIS 350FX has been designed and constructed for **use in harsh outdoor and industrial environments**. It is **compact, cost effective and easily configured**, with support for a wide range of instrumentation. The communication slots support wireless 3G modem, Iridium satellite, ethernet, RS232, SDI-12 and modbus slave protocol for SCADA. An integral wireless modem provides network connectivity.

### Configuration & Data Download

iRIS 350FX is configured locally via RS232 connection using HyQuest Solutions' **free-of-charge iLink software** (Windows, Android). iLink is used to configure and check monitored values and to download data from the iRIS 350FX. The optional HydroTel™ telemetry software can be used for remote configuration and downloading.

### Options for data access / download

- Direct RS232 connection e.g. laptop, data radio or bluetooth adaptor
- FTP file transfer (up to 2 pre-configured locations)
- IP based packet transfer (TCP/UDP)
- SMS text back (current sensor values)
- Voice annunciation (iRIS 350FXV only)

## Main Features

- Aluminium die-cast housing
- IP67
- Low power consumption, battery operated, solar chargeable (optional solar panel available)
- Up to 20 virtual sensors
- 40 alarms that can be assigned to any virtual sensor
- Non-volatile memory
- Security: Configurable with a pin-code to prevent unauthorized access to information
- Small graphics LCD display and 4 button keypad for viewing general and sensor information, running totals, etc.

## Applications

The iRIS 350FX is especially suitable for

- Data Acquisition
- Hydrometric Stations
- Automatic Weather Stations
- Environmental Monitoring
- Agrimeteorological Monitoring



## Technical Specifications

### Digital Input/Output

- 4 x digital I/O channels (configurable)
- Inputs: clean contact to 0 V **or** 3.6-12 V DC referenced to GND
- Outputs: switched 12 V **or** open-drain sinking to 0 V, both limited to 100 mA

### Analogue Input/Output

- 4 analogue Inputs: uni-polar, 16 bit resolution, 30 V DC surge-protection
- Input ranges: 0-1.25 V, 0-2.5 V and 0-5 V
- Internal 100  $\Omega$  sink resistors allow use of input current (0/4-20 mA).
- 1 analogue (excitation) output for energizing passive instruments (e.g. potentiometer type wind vanes) or alternatively for sending a derived analogue signal to other equipment, selectable as 0-5 V or 4-20 mA

### Communications

- Non-isolated DTE RS232 at 1200-115200 bps (default 38400 bps)
- Wireless 3G modem or a custom comms module on PCB Rev 1.2+
- SDI12 instrumentation port, complies with SDI12 V1.3
- Serial VGA camera proprietary connection (3.3 V CMOS levels)

### Power Supply

- Internal/external 12 V rechargeable SLA battery, integral charger 15-30 V DC input, optional: solar panel (easily pluggable without additional regulator)
- Lowest power mode current 3 mA
- Over voltage and reverse polarity protected with self-resetting fuse
- Voltage of battery and charger input: monitored, logged, displayed, alarmed

### Data Storage: Flash Memory

- Total 16 MB, of which 8 MB allocated to logged data/stored images (1,084,576 samples), or audio file storage for up to two languages (iRIS 350FXV only)
- Typical autonomy: 2 parameters logged every 15 minutes and battery voltage logged hourly will give almost 12 years of storage.

### Status LEDs

- 1 tri-colour LED for overall operational state
- 8 LEDs for status of communication devices (I/O status and communication activity)

### Real-time Clock / Calendar

- High accuracy, backed by on-board lithium battery to prevent loss of date/time

### Environmental Conditions

- Enclosure: IP67, die-cast aluminium alloy, hard grey paint finish, neoprene gasket
- Operating temperature: -10 °C to +70 °C (14 °F to +158 °F)
- Storage temperature: -30 °C to +85 °C (-22 °F to +185 °F)

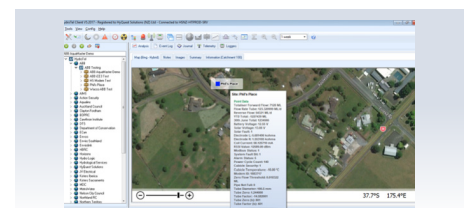
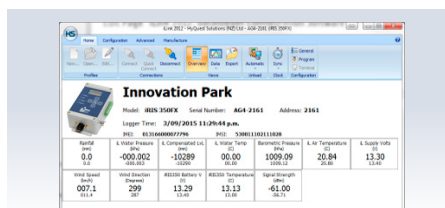
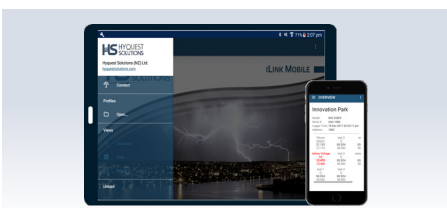
### Size (WxHxD) and Mass

160 x 130 x 70 mm (6.29 in x 5.11 in x 2.75 in); 1.3 kg (2.86 lb) incl. internal SLA battery

### Conformity / Compliance

RoHS, FCC, CE (WEEE pending)

## Software: iLink & HydroTel™



Reseller

### HyQuest Solutions Australia

✉ sales@hyquestsolutions.com.au  
🌐 www.hyquestsolutions.com

### HyQuest Solutions New Zealand

✉ sales@hyquestsolutions.co.nz  
🌐 www.hyquestsolutions.com

### HyQuest Solutions Europe

✉ info@hyquestsolutions.eu  
🌐 www.hyquestsolutions.eu

